

INSIDEEES

INSPIRING HOMES WITH HEART

**WINDOW
MAGIC**
BEAUTIFUL
CURTAINS,
BLINDS &
SHUTTERS

YOUR
COMPLETE
GUIDE TO
BESPOKE
JOINERY

**OUR
SPRING
EDIT**
FRESH
PRINTS &
DESIGN
BUYS

*the allure
of the*
**eclectic
kitchen**

Real makeovers with style...
from minimal to the max


*“Everything I love to cook”
by Neil Perry*

KITCHEN APPLIANCE REPORT SUPER SMART & SUPER SIZED

cheat sheet

Who lives here Kathryn and her husband with their three teenage children, Emily, Hamish and Jess, plus dog Stanley, a Staffordshire bull terrier.

Style of home A 1930s house on 1500 square metres that's been extended and updated with an Industrial/Scandi/Minimalist aesthetic to work with the original structure.

 After years of planning, the build phase began in January 2018 and took 19 months.

CLOSING THE GAP

The team behind this Sydney renovation bridged the chasm between old and new with made-to-order minimalism

PHOTOGRAPHY ASSISTANT: PALOMA MAINE

LIVING AREA Though the polished concrete floors in the new section are hydronically heated, the cosy Cheminees Philippe fireplace still brings the family together in winter. Owner Kathryn's favourite piece of furniture is the dining table. "It was designed to fit the space by FM Interiors and made by Fingerprint Furniture Design," she explains. The dining chairs are from Cosh Living. Drinking glasses, Freedom. 101 Copenhagen 'The Duck Tray', Mette Collections. Just visible (on the far left) is the outdoor bar.





good news

A skillion roof over the new pavilion allowed for a large solar-panel array to be installed. It's attached to battery storage, which now offsets the majority of the home's power consumption.

cave (aka games room) with pool table near access to the wine cellar, and four extra storage rooms with individual roller doors, which are located outside along the home's side passage. One of Kathryn's favourite spaces is the elegant main bedroom, which was relocated and expanded. "We took out a bedroom so we could create a new ensuite and have a lot more storage," she says.

Stylistically, the pavilion extension has minimalist leanings intended to contrast with the Art Deco part of the house, using a sympathetic blend of materials to ensure there's little visual disruption between the two. "We wanted to bring the style of the original home into the extension, so we included some of its design features, such as curved walls, P&O-style windows and ribbed glass," says Kathryn. She and the designers chose a colour palette of white and dark grey for the interiors, softened by light oak-veneer joinery and stained cedar cladding. "We went for a neutral palette as we wanted the pavilion's big steel structure system to be the star. We used furnishings and art to add colour.

"Our home has been designed for how we live," she adds. "There are places to relax and spaces to interact together – large, open family zones. That was the main reason for the renovation, and to open up the aperture of the garden so it became the focal point of the living space – we got all that." **10**

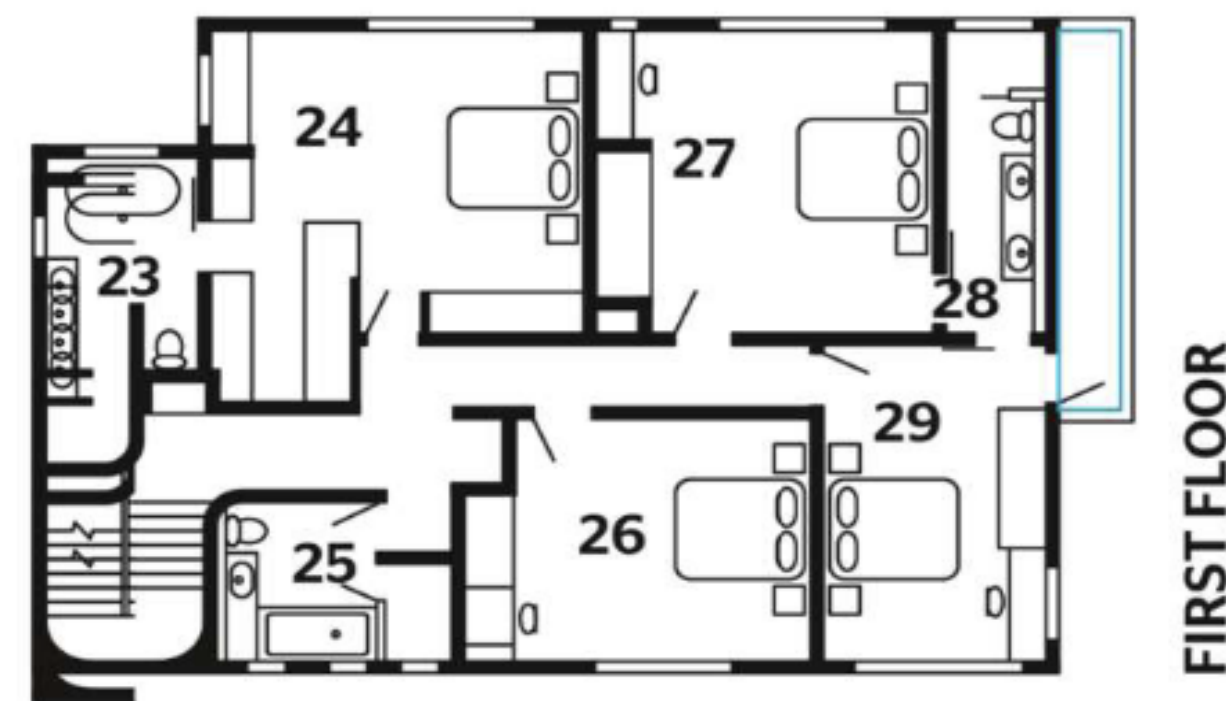
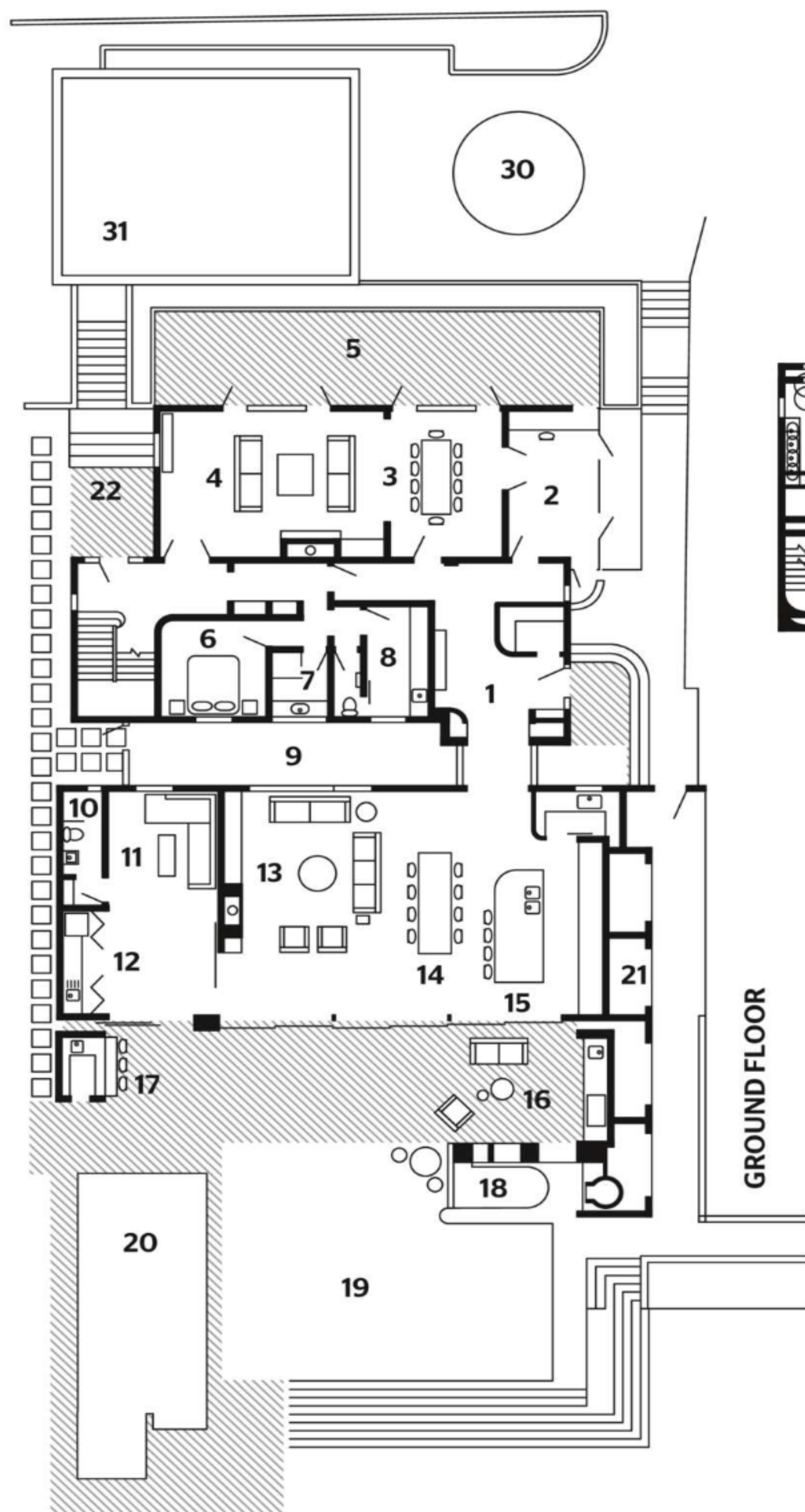
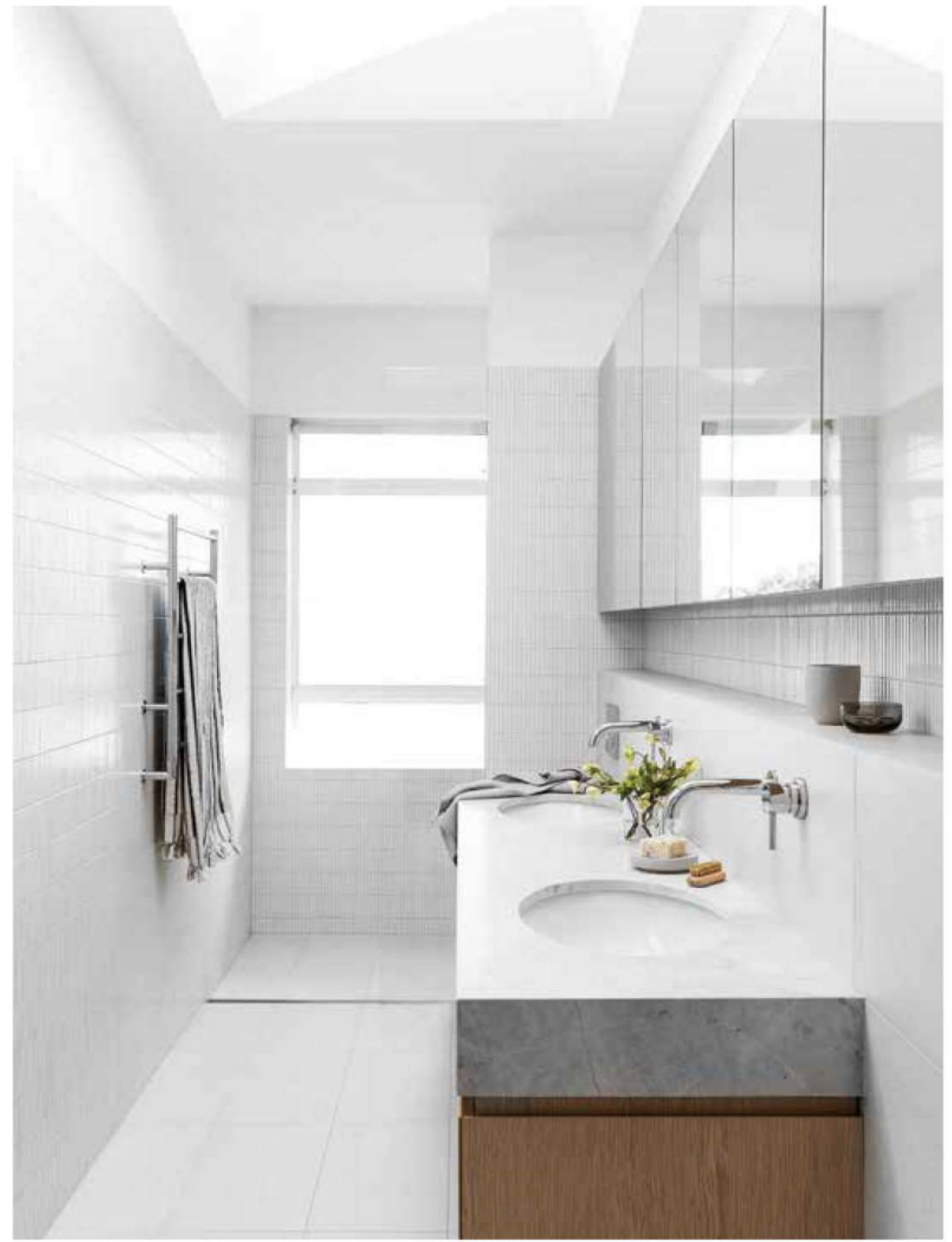
Graeme Bell of Trace Architects can be contacted via tracearchitects.com.au or [@the_modernist](https://www.instagram.com/the_modernist). Illuka Constructions is at illukaconstructions.com.au

KITCHEN (both pages) An earlier extension had situated the kitchen in the middle of the home, so it was moved to the back of the steel-braced pavilion and reconnected to the garden and outdoor entertaining areas. Clever design elements in the new space range from the sculptural (the curved walls and concrete island bench) to the practical (rubbish chutes in the butler's pantry, which drop straight into outdoor bins). The pale oak-veneer cabinetry was designed by Trace Architects and built by Janz Designs. Ribbed glass was used for the splashback to tie in with the steel-framed windows of the original house. Zip Hydrotap Celsius All-In-One Arc Tap in Brushed Chrome, Harvey Norman. Compendium LED Suspension Light by Luceplan. Black kitchen stools, Cosh Living.



“The boldness of the dark
and white is softened by the
light oak-veneer joinery”

GRAEME BELL, ARCHITECT



- 1 Entry
- 2 Study
- 3 Formal dining
- 4 Formal living
- 5 Patio
- 6 Guest room
- 7 Bathroom
- 8 Laundry
- 9 Courtyard atrium
- 10 Bathroom
- 11 Games room
- 12 Kitchenette
- 13 Living area
- 14 Dining area
- 15 Kitchen
- 16 Covered terrace/
barbecue area
- 17 Outdoor bar
- 18 Fire pit and pizza
oven (at back)
- 19 Lawn
- 20 Pool
- 21 Storage cupboards
- 22 Garage entry
- 23 Main ensuite
- 24 Main bedroom
- 25 Bathroom
- 26 Bedroom
- 27 Bedroom
- 28 Bathroom
- 29 Bedroom
- 30 Car turntable
- 31 Garage

lessons learnt

“Don’t assume you’ll have to move out when your house is being renovated”

KATHRYN, HOMEOWNER

“We lived in the house throughout the entire renovation. While there were challenges involved with the builders working around us, they were a great team of guys so it was all very smooth. I would do this again if I did another project, as I think it’s really important to be on site and make decisions about issues as they arise.”

BATHROOMS (below and opposite right) For consistency, many of the same materials were used in the wet areas, though the tiles presented a challenge. "We have curved walls in some of the bathrooms from the original house and wanted to keep them, but it was tricky to find a tile that could be used on curved walls as we didn't want to use a traditional mosaic," says Kathryn, who eventually opted for Inax 'Yohen Border' tiles from Artedomus. She used them in all the bathrooms but in different colours to tie the design together. The benchtops and flooring are Elba marble and all the tapware is from Astra Walker. Clearwater 'Formoso' bath, Reece. Hand towel, Oliver Thom. **BEDROOM** (opposite left) The serene scheme continues in here. Bed linen, Cultiver. Black pot, Curatorial+Co.



